



2 Bedrooms | 1 Bathrooms | 1 Reception Rooms

Hartley Down | Purley | CR8 4EA

**£340,000**

LOFT



# Hartley Down | Purley | CR8 4EA £340,000

- Modern apartment with private terrace
- Allocated parking and communal garden
- Tastefully designed open plan living with high quality integrated appliances
- Slick wooden flooring throughout and fully tiled bathroom
- Two double bedrooms, ideal for families or working from home
- Within walking distance to Reedham and Purley train stations
- Great bus links and amenities nearby

## Ground Floor

## Hallway

## Open

## Plan/Kitchen/Reception

## Room

## Bedroom

15'7 x 12'5 (4.75m x 3.78m)

## Bedroom

11'2 x 9'3 (3.40m x 2.82m)

## Bathroom

## Outside

## Terrace

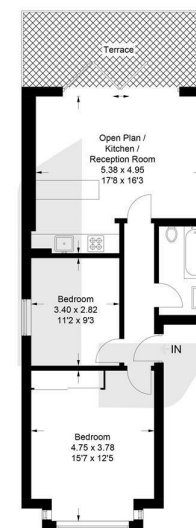
## Allocated Parking

## Communal Garden

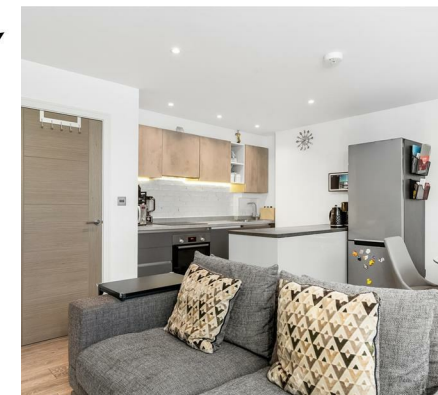


## Hartley Down, CR8

Approximate Gross Internal Area = 62.8 sq m / 676 sq ft



This plan is for layout guidance only. Not drawn to scale unless stated. Windows and door openings are approximate. Whilst every care is taken in the preparation of this plan, please check all dimensions, shapes and compass bearings before making any decisions reliant upon them. (ID1264633)



EPC Rating: B

23a High Street  
Purley  
Surrey  
CR8 2AF  
0208 660 8070  
hello@loft-estates.co.uk